



# AMITY REGIONAL HIGH SCHOOL

COLLEGE ADMISSIONS PROFILE 2017 – 2018 | CEEB CODE # 070965

Regional School District #5: Bethany – Orange – Woodbridge

Dr. Charles S. Dumais - *Superintendent of Schools*  
Anna Mahon - *Principal*  
Jill LaPlante - *Director of Counseling*

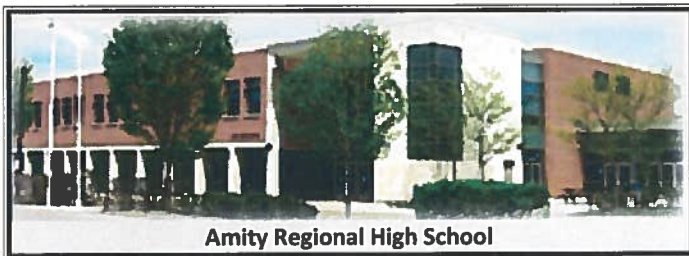
25 Newton Road  
Woodbridge, Connecticut 06525  
203-397-4830 – Main office  
203-397-4846 – Counseling Office  
[amityregion5.org](http://amityregion5.org)



## Community

Spanning 58 square miles and located 75 miles east of New York City, Amity Regional School District #5 serves the educational needs of Bethany, Orange and Woodbridge, Connecticut for grades 7-12. It consists of one high school, grades 9-12, and two middle schools, grades 7-8. The district is contiguous to New Haven, a major center of higher education, medicine and the arts. Home to many professionals, in 2010 the average median family income was \$121,500 in the district. The vast majority of family dwellings are single-family owner-owned homes.

## School



Amity Regional High School

Amity Regional High School is a comprehensive four-year public high school enrolling 1,484 students in grades 9–12. Rounded to the nearest whole, 78% of the students are white, 14% are Asian American, 1% are Hispanic, 3% are black and 4% are multi-racial or non-identified. The school opened in 1954 and was rebuilt in the early 1990's. Amity Regional High School was recently re-accredited by the New England Association of Schools and Colleges with superior ratings. The school is a member of the National Association for College Admission Counseling.

In recent years, the school ranked #1 in Connecticut in an annual *Newsweek* poll and was also named a *National Blue Ribbon High School*.

## Special Programs

- **Science Research Program:** A four-year *honors*, application only, program taken in conjunction with a regular science course load.
- **Educational Center for The Arts:** An off-campus program in New Haven offering courses in dance, instrumental and vocal music, poetry and prose, theater and visual arts. Admission is competitive. Students earn two courses worth of honors credit annually toward graduation.
- **University of Connecticut ECE:** An opportunity for students to take UConn courses while still in high school.
  - **Partnerships with Yale University, Southern CT State University, and Gateway Community College:** Students apply to take courses and seminars offered after school, evenings and Saturdays on the college campuses.
- **Independent Study:** Sophomores, juniors and seniors may apply. After approval, students conduct an in-depth study in an area of interest. Honors credit is awarded.
- **International Studies Program:** Amity students come together with students from surrounding schools to study a specific

## Graduation Requirements

Graduation requires 24 credits, which must include successful completion of four years of English; three years of social studies; four years of math; three years of science; two years of world language; three years of physical education and health; and one year of applied education or fine arts/media. Full-year courses are awarded 1.0 credit, semester courses earn .50 credit.

All students must demonstrate criteria-based technology literacy and score at the *proficient* level on the *Connecticut Academic Performance Test (CAPT)* administered in tenth grade. Amity offers a *community service incentive*. Students who complete 100 hours of community service, at least 25 during each high school year, are recognized with a *Community Service Graduation Distinction*.

## AP Advanced Placement Courses – 24 offered

### English

- Capstone Research
- Capstone Seminar
- Language & Comp
- Literature & Comp

### Math

- Statistics
- Calculus AB
- Calculus BC
- Computer Science A

### Science

- Biology
- Physics C
- Physics I
- Chemistry
- Environmental Science

### Social Studies

- US Government & Politics
- US History
- Psychology

### World Language

- Spanish Lang & Culture
- Spanish Lit & Culture
- French Lang & Culture
- Chinese Lang & Culture
- Latin

### The Arts

- Music Theory
- Studio Art: Drawing
- Art History

In 2017 Amity administered 786 AP exams to 414 students. 89% scored 3 or better. 60% scored 4 or 5.

## HONORS Honors Level Courses – 36 offered

**English:** Eng II & III, Humanities, Reading & Writing Poetry, Shakespeare, Philosophy, World Literature, College Research & Writing

**Math:** Algebra II, Pre-Calculus

**Science:** Science Research Program, Marine Biology & Oceanography, Physics for Engineering, Human Anatomy & Physiology, Chemistry I, Physics I

**Social Studies:** Critical Issues in Foreign & Domestic Politics, Intro to Sociology, US Civics

**World Language:** Spanish III, Chinese III & IV, French III, Latin III

**The Arts:** Ceramics & Pottery, Art & Portfolio, Advanced Acting, Symph. Wind Ensemble, Strings Ensemble, Symph. Orch., Chamber Orch., Chamber Singers, Educational Center for the Arts (ECA), Understanding Film, Documentary & Experimental Film.

**Career and Tech. Ed.:** Advanced Accounting

international topic.

- **Senior Internship Program:** Seniors may apply for an internship that occurs in the final month of senior year. Students are placed in work experiences where they receive on-the-job training and field experience in a chosen career field.

### Course Level Descriptions

**LH – Honors level** provides the most rigorous courses and requires superior scholarship. Some involve preparation for AP exams and are conducted at a pace comparable to college level courses.

**L1 – Level one** provides a comprehensive, challenging curriculum and includes preparation for some AP exams.

**L2 – Level two** provides courses that offer a challenging and comprehensive curriculum requiring above average academic ability.

**L3 – Level three** provides a basic foundation for academic work for post-secondary schools and colleges.

**LE – Level electives** provides courses in which course objectives and activities are appropriate for all students. These courses receive the same weight in calculating WGPA as a Level 2 course.

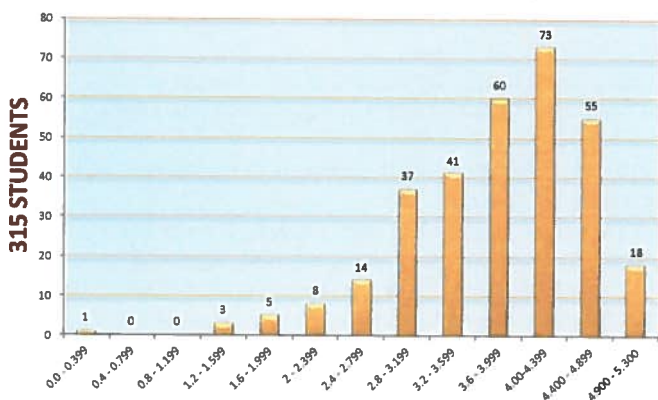
### Weighted Grade Point Average & Grading System

All courses are included in the weighted and unweighted GPA calculations except physical education, health and any pass/fail or transfer courses. The scale below is used to calculate a WGPA:

Grade	GPA	LH	L1	L2	L3
A+	4.3	5.6	5.16	4.73	4.3
A	4.0	5.3	4.86	4.43	4.0
A-	3.7	5.0	4.56	4.13	3.7
B+	3.3	4.6	4.16	3.73	3.3
B	3.0	4.3	3.86	3.43	3.0
B-	2.7	4.0	3.56	3.13	2.7
C+	2.3	3.6	3.16	2.73	2.3
C	2.0	3.3	2.86	2.43	2.0
C-	1.7	3.0	2.56	2.13	1.7
D+	1.3	2.6	2.16	1.73	1.3
D	1.0	2.3	1.86	1.43	1.0
D-	0.7	2.0	1.56	1.13	0.7
F	0.0	0.0	0.0	0.0	0.0

### Class of 2018 Weighted Grade Point Averages - 315 Students

Highest WGPA: 5.3186 | Lowest WGPA: 0.2334 | Average WGPA: 3.8130



### School Counselors

- Email Format: [firstname.lastname@reg5.k12.ct.us](mailto:firstname.lastname@reg5.k12.ct.us)
- Marian Boyns
  - Courtney Campbell
  - Lisa Conley
  - Gerilyn Ferguson
  - Brian LaRochelle
  - John Mezzo
  - Ashley Mozealous
  - Alison Staak
- Karen Waterman — Career Center Director

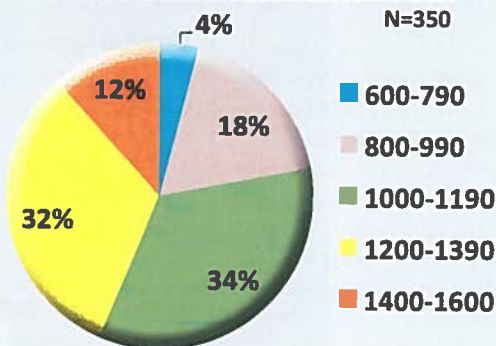
INFO



Graduates	346
4-Year Schools	307
2-Year Schools	20
Work/Gap/Military	19

### SAT TOTAL MEAN SCORE DISTRIBUTION

N=350



### SAT Reasoning Summary

Mean Scores - 350 tests

- Evidence Based Reading & Writing: 582
- Math: 573

### ACT Summary

Mean Scores - 160 tests

- English: 25.5
- Math: 25.5
- Reading: 26.1
- Science: 25.1
- Composite: 25.6



### NATIONAL MERIT SCHOLARSHIP PROGRAM

6 National Merit semi-finalists  
6 National Merit finalists  
19 National Merit commended students



### Athletics

Amity High School has a rich history of outstanding athletics offering 32 varsity level programs. In 2016-2017, Amity athletes were Southern Connecticut Conference (SCC) Division Champions in Boys Cross Coun-

try, Baseball, Boys Golf, Girls Volleyball, and Softball and Southern Connecticut Conference (SCC) League Champions in Girls Volleyball and Baseball. In addition, Baseball was Connecticut Inter-Scholastic Athletic Conference (CIAC) Class LL state runner up; Girls Volleyball was CIAC Class LL semi-finalists; Softball was CIAC Class LL quarter-finalists.

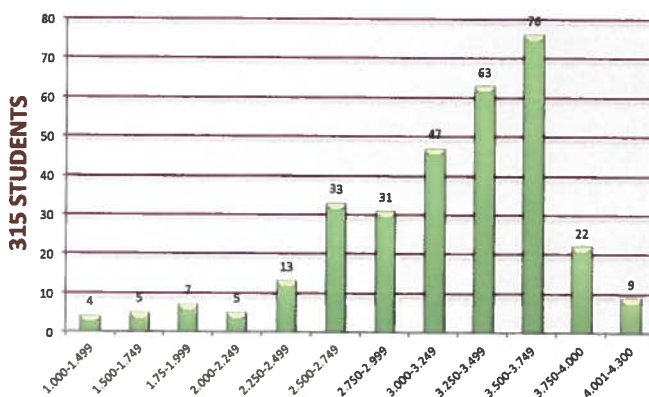
## CLASS OF 2018

### Class of 2018 Class Rank and Grade Point Average

Individual class rank is not reported. A weighted Grade Point Average and an unweighted Grade Point Average are reported for the 315 seniors who have attended Amity High School for three full years. (See table at left and charts below.)

### Class of 2018 Unweighted Grade Point Averages - 315 Students

Highest GPA: 4.186 | Lowest GPA: 0.197 | Average WGPA: 3.172



### Disclosure Statement

Amity Regional High School does not disclose confidential disciplinary records to post secondary institutions except as it may be required by law.

COLLEGES ATTENDED BY AMITY REGIONAL HIGH SCHOOL CLASS OF 2017
---

American University	Hofstra University	The Culinary Institute of America
Arizona State University	Indiana University at Bloomington	The George Washington University
Armstrong State University	Iona College	The New School - All Divisions
Babson College	Ithaca College	The University of Oklahoma
Bard College	Johns Hopkins University	Trinity College
Barnard College	Johnson & Wales University	Tufts University
Bay State College	Lasell College	Tulane University
Bemidji State University	Lawrence University	Union College (New York)
Berklee College of Music	Liberty University	United States Military Academy - Army
Boston College	Loyola University Maryland	University of Bridgeport
Boston University	Lyme Academy College of Fine Arts	University of California, Irvine
Bowdoin College	Macalester College	University of Colorado at Boulder
Brandeis University	Marist College	University of Colorado Colorado Springs
Brown University	Massachusetts Maritime Academy	University of Connecticut
Bryant University	McDaniel College	University of Hartford
Bryn Mawr College	MCPHS - Massachusetts College of Pharmacy & Health Sciences	University of Illinois at Chicago
California Institute of Technology	Merrimack College	University of Maine
Campbell University	Messiah College	University of Maryland, College Park
Carnegie Mellon University	Michigan State University	University of Miami
Central Connecticut State University	Mount Ida College	University of Michigan
Christopher Newport University	Naugatuck Valley Community College	University of Mississippi
Clark University	Nichols College	University of New England
Colby College	Northeastern University	University of New Hampshire at Durham
College of William and Mary	Pennsylvania State University	University of New Haven
Colorado Mountain College	Post University	University of North Carolina at Wilmington
Columbia College Chicago	Providence College	University of Pittsburgh
Cornell University	Purchase College State University of New York	University of Rhode Island
Dean College	Quinnipiac University	University of Rochester
Dordt College	Regis College	University of South Carolina
Eastern Connecticut State University	Robert Morris University (PA)	University of Southern California
Elon University	Rochester Institute of Technology	University of Southern Maine
Embry-Riddle Aeronautical University - Daytona Beach	Roger Williams University	University of Vermont
Fairfield University	Rowan University	Villanova University
Fitchburg State University	Sacred Heart University	Virginia Tech
Flagler College	Salem State University	Wentworth Institute of Technology
Florida Atlantic University	Sarah Lawrence College	West Chester University of Pennsylvania
Florida Gulf Coast University	Smith College	West Virginia University
Florida Southern College	Southern Connecticut State University	Western Connecticut State University
Fordham University	Springfield College	Western New England University
Gateway Community College	St. John's University - Queens Campus	Wheaton College MA
Georgetown University	Stevenson University	Yale University
Georgia Institute of Technology	SUNY College at Cortland	
Hamilton College - NY	SUNY Morrisville State College	
Haverford College	The College of Saint Rose	
High Point University		

