



# AMITY REGIONAL HIGH SCHOOL

COLLEGE ADMISSIONS PROFILE 2016 – 2017 | CEEB CODE # 070965  
Regional School District #5: Bethany – Orange – Woodbridge



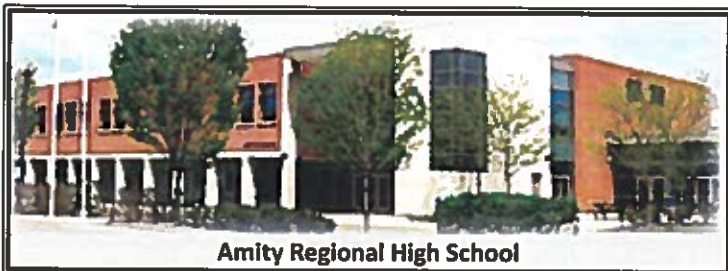
Dr. Charles S. Dumais - *Superintendent of Schools*  
Anna Mahon - *Principal*  
Jill LaPlante - *Director of Counseling*

25 Newton Road  
Woodbridge, Connecticut 06525  
203-397-4830 – Main office  
203-397-4846 – Counseling Office  
amityregion5.org

## Community

Spanning 58 square miles and located 75 miles east of New York City, Amity Regional School District #5 serves the educational needs of Bethany, Orange and Woodbridge, Connecticut for grades 7-12. It consists of one high school, grades 9-12, and two middle schools, grades 7-8. The district is contiguous to New Haven, a major center of higher education, medicine and the arts. Home to many professionals, in 2010 the average median family income was \$121,500 in the district. The vast majority of family dwellings are single-family owner-owned homes.

## School



Amity Regional High School

Amity Regional High School is a comprehensive four-year public high school enrolling 1,466 students in grades 9–12. Rounded to the nearest whole, 74% of the students are white, 14% are Asian American, 4% are Hispanic, 4% are black and 3% are multi-racial or non-identified. The school opened in 1954 and was rebuilt in the early 1990's. Amity Regional High School was recently re-accredited by the New England Association of Schools and Colleges with superior ratings. The school is a member of the National Association for College Admission Counseling.

In recent years, the school ranked #1 in Connecticut in an annual *Newsweek* poll and was also named a *National Blue Ribbon High School*.

## Special Programs

- **Science Research Program:** A four-year *honors*, application only, program taken in conjunction with a regular science course load.
- **Educational Center for The Arts:** An off-campus program in New Haven offering courses in dance, instrumental and vocal music, poetry and prose, theater and visual arts. Admission is competitive. Students earn two courses worth of honors credit annually toward graduation.
- **University of Connecticut ECE:** An opportunity for students to take UConn courses while still in high school.
  - Partnerships with Yale University, Southern CT State University, and Gateway Community College: Students apply to take courses and seminars offered after school, evenings and Saturdays on the college campuses.
- **Independent Study:** Sophomores, juniors and seniors may apply. After approval, students conduct an in-depth study in an area of interest. Honors credit is awarded.

## Graduation Requirements

Graduation requires 24 credits, which must include successful completion of four years of English; three years of social studies; three years of math; three years of science; two years of world language; three years of physical education and health; and one year of applied education or fine arts/media. Full-year courses are awarded 1.0 credit, semester courses earn .50 credit. All students must demonstrate criteria-based technology literacy and score at the *proficient* level on the *Connecticut Academic Performance Test (CAPT)* administered in tenth grade. CAPT scores are included with all transcripts for the class of 2017. Amity offers a *community service incentive*. Students who complete 100 hours of community service, at least 25 during each high school year, are recognized with a *Community Service Graduation Distinction*.

## AP Advanced Placement Courses – 23 offered

### English

- Capstone Seminar
- Language & Comp
- Literature & Comp

### Math

- Statistics
- Calculus AB
- Calculus BC
- Computer Science A

### Science

- Biology
- Physics C
- Chemistry
- Environmental Science

### Social Studies

- US Government & Politics
- US History

- Psychology

### World Language

- Spanish Lang & Culture
- Spanish Lit & Culture
- French Lang & Culture
- Chinese Lang & Culture
- Latin

### The Arts

- Music Theory
- Studio Art: 3-D Design
- Studio Art: Drawing
- Art History

In 2016 Amity administered 795 AP exams to 395 students. 88% scored 3 or better. 61% scored 4 or 5.

## HONORS Honors Level Courses – 30 offered

**English:** Eng II & III, Humanities, Reading & Writing Poetry, Shakespeare, Philosophy, World Literature, College Research & Writing

**Math:** Algebra II, Pre-Calculus

**Science:** Science Research Program, Marine Biology & Oceanography, Physics for Engineering, Human Anatomy & Physiology, Chemistry I, Physics I

**Social Studies:** Critical Issues in Foreign & Domestic Politics, Intro to Sociology

**World Language:** Spanish III, Chinese III-IV, French III, Latin III

**The Arts:** Ceramics & Pottery, Art & Portfolio, Advanced Acting, Symph. Wind Ensemble, Symph. Orchestra, Chamber Singers

- **International Studies Program:** Amity students come together with students from surrounding schools to study a specific international topic.
- **Senior Internship Program:** Seniors may apply for an internship that occurs in the final month of senior year. Students are placed in work experiences where they receive on-the-job training and field experience in a chosen career field.

### Course Level Descriptions

**LH – Honors level** provides the most rigorous courses and requires superior scholarship. Some involve preparation for AP exams and are conducted at a pace comparable to college level courses.

**L1 – Level one** provides a comprehensive, challenging curriculum and includes preparation for some AP exams.

**L2 – Level two** provides courses that offer a challenging and comprehensive curriculum requiring above average academic ability.

**L3 – Level three** provides a basic foundation for academic work for post-secondary schools and colleges.

**LE – Level electives** provides courses in which course objectives and activities are appropriate for all students. These courses receive the same weight in calculating WGPA as a Level 2 course.

### Weighted Grade Point Average & Grading System

All courses are included in the weighted and unweighted GPA calculations except physical education, health and any pass/fail or transfer courses. The scale below is used to calculate a WGPA:

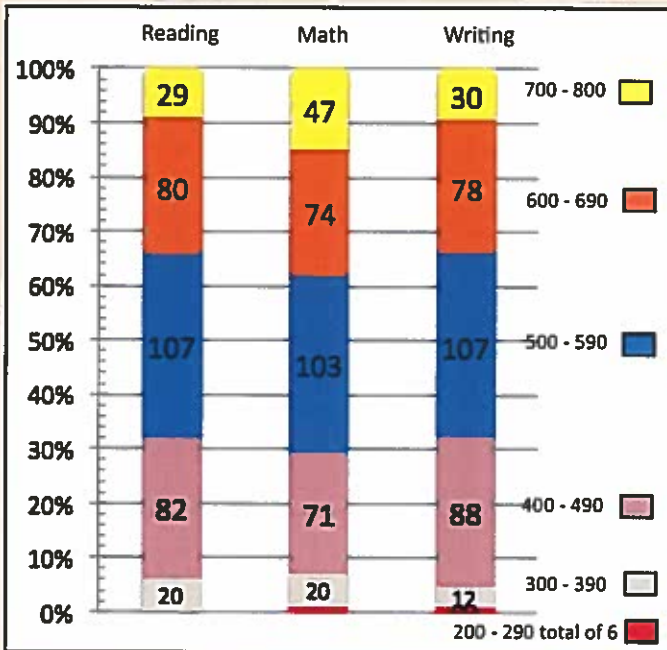
Grade	GPA	LH	L1	L2	L3
A+	4.3	5.6	5.16	4.73	4.3
A	4.0	5.3	4.86	4.43	4.0
A-	3.7	5.0	4.56	4.13	3.7
B+	3.3	4.6	4.16	3.73	3.3
B	3.0	4.3	3.86	3.43	3.0
B-	2.7	4.0	3.56	3.13	2.7
C+	2.3	3.6	3.16	2.73	2.3
C	2.0	3.3	2.86	2.43	2.0
C-	1.7	3.0	2.56	2.13	1.7
D+	1.3	2.6	2.16	1.73	1.3
D	1.0	2.3	1.86	1.43	1.0
D-	0.7	2.0	1.56	1.13	0.7
F	0.0	0.0	0.0	0.0	0.0



### Class of 2016 Information

Graduates	388
4-Year Schools	328
2-Year Schools	28
Work/Gap/Military	32

SAT Reasoning Test: 318 Reported Scores



SAT Reasoning Test Summary - Mean Scores

- Critical Reading: 552
- Math: 561
- Writing: 552

ACT Summary - Mean Scores - 215 tests

- English: 26.1
- Math: 25.3
- Reading: 26.5
- Science: 25.2
- Composite: 25.9



### Athletics

Amity High School has a rich history of out-

standing *athletics* offering 30 varsity level programs.

In 2015-16 Amity athletes won CIAC LL state titles in boys cross country and baseball, and were state runner-up in boys tennis and softball. Athletic teams won eight SCC league titles. The baseball team set a new state record with four consecutive state titles.



### NATIONAL MERIT SCHOLARSHIP PROGRAM

6 National Merit semi-finalists  
4 National Merit finalists  
18 National Merit commended students

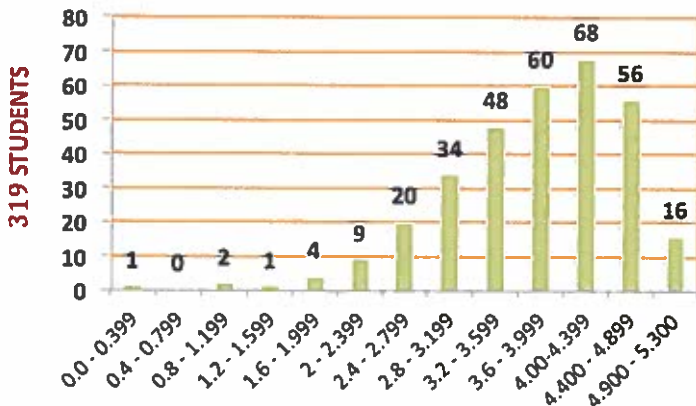
### CLASS OF 2017

### Class of 2017 Class Rank and Grade Point Average

Individual class rank is not reported. A *weighted* Grade Point Average and an *unweighted* Grade Point Average are reported for the 319 seniors who have attended Amity High School for three full years. (See table at left and charts below.)

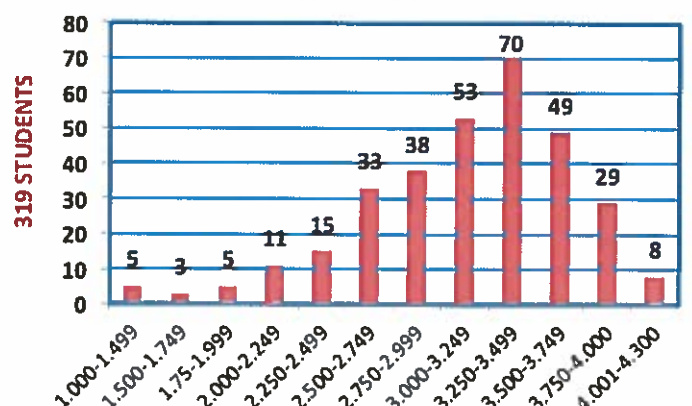
### Class of 2017 WEIGHTED Gradepoint Averages - 319 Students

Highest WGPA: 5.2424 | Lowest WGPA: 0.3853 | Average WGPA: 3.7695



### Class of 2017 UNWEIGHTED Gradepoint Averages - 319 Students

Highest GPA: 4.171 | Lowest GPA: 0.295 | Average GPA: 3.130



### School Counselors

Email Format: [firstname.lastname@reg5.k12.ct.us](mailto:firstname.lastname@reg5.k12.ct.us)

- Marian Boyns
- Courtney Campbell
- Lisa Conley
- Gerilyn Ferguson
- Brian LaRochelle
- John Mezzo
- Ashley Mozealous
- Allison Staak

Karen Waterman — Career Center Director

### Disclosure Statement

Amity Regional High School does not disclose confidential disciplinary records to post secondary institutions except as it may be required by law.



## COLLEGES ATTENDED BY AMITY REGIONAL HIGH SCHOOL CLASS OR 2016 GRADUATES

Albertus Magnus College	Ithaca College	Southern Connecticut State Univ.
Amherst College	James Madison University	Southern New Hampshire Univ.
Bay Path University	Kansas City Art Institute	John's Univ. - Queens Campus
Becker College	Keene State College	Stanford University
Bennington College	Kenyon College	State Univ. of New York at Albany
Bentley University	Lehigh University	Stonehill College
Binghamton University	LIM College (Laboratory Institute of	Stony Brook University
Boston College	Merchandising)	Susquehanna University
Boston University	Long Island Univ., Brooklyn	Syracuse University
Bowdoin College	Marshall University	The Citadel, the Military College of
Brandeis University	Massachusetts College of Liberal Arts	South Carolina
Bristol Technical Education Center	Massachusetts Maritime Academy	The George Washington Univ.
Brown University	McGill University	The Univ. of Alabama
Bryant University	Merrimack College	The Univ. of Scranton
Bryn Mawr College	Miami Univ., Oxford	The Univ. of Tampa
Bucknell University	Michigan State University	Tufts University
California Institute of Technology	Monmouth University	United States Naval Academy
Carnegie Mellon University	Mount Holyoke College	Universal Technical Institute
Castleton University	Muhlenberg College	Univ. of Colorado at Boulder
Central Connecticut State Univ.	Naugatuck Valley Community-Technical	Univ. of Connecticut
Clark University	College	Univ. of Connecticut at Stamford
Colby-Sawyer College	New York Film Academy	Univ. of Delaware
College of Charleston	New York University	Univ. of East London
College of Mount Saint Vincent	Northeastern University	Univ. of Hartford
Connecticut College	Northwest Vista College	Univ. of Hawaii at Manoa
Cornell University	Northwestern University.	Univ. of Illinois at Urbana-Champaign
Dean College	Norwich University	Univ. of Kansas
Delaware State University	Oxford Academy of Hair Design	Univ. of Maine
Denison University	Pace Univ., New York City	Univ. of Maryland, College Park
Drexel University	Pennsylvania State Univ. - All Campuses	Univ. of Massachusetts, Amherst
Eastern Connecticut State Univ.	Plymouth State University	Univ. of Miami
Eli Whitney Regional Vocational-	Pomona College	Univ. of Michigan
Technical School	Porter and Chester Institute (Stratford)	Univ. of New Hampshire at Durham
Elon University	Providence College	Univ. of New Haven
Embry-Riddle Aeronautical Univ. -	Purchase College State Univ. of New	Univ. of North Carolina at Wilmington
Daytona Beach	York	Univ. of Pittsburgh
Emory University	Purdue University	Univ. of Rhode Island
Endicott College	Quinnipiac University	Univ. of Richmond
Fairfield University	Reed College	Univ. of South Carolina
Fairleigh Dickinson Univ. - Metropolitan	Rensselaer Polytechnic Institute	Univ. of Utah
Campus	Rhode Island College	Univ. of Vermont
Fitchburg State University	Rhode Island School of Design	Univ. of Virginia
Flagler College	Rochester Institute of Technology	Vassar College
Florida Gulf Coast University	Roger Williams University	Virginia Tech
Fordham Univ. - Lincoln Center Campus	Sacred Heart University	Wake Forest University
Franklin Pierce University	Saint Anselm College	Washington Univ. in St. Louis
Gateway Community College	Saint Mary's College	Wesleyan University
Gettysburg College	Salve Regina University	Western Connecticut State Univ.
Haverford College	School of Visual Arts	Wheelock College
Hobart and William Smith Colleges	Siena College	Worcester Polytechnic Institute
Hofstra University	Simmons College	Yale University
Housatonic Community College	Smith College	